

CBSE AFFILIATION NO. 430470
NEP READY



GLOBAL
**DISCOVERY
SCHOOL**
HALOL
RAY OF HOPE



Presents

RAY OF HOPE

APRIL SYNOPSIS

2026-27



FOR THE GLOBALITES



A school is not merely a place of academic instruction; it is a living ecosystem where minds are nurtured, values are instilled, and futures are shaped. As a Managing Director, I firmly believe that continuous and comprehensive development of both students and staff lies at the heart of a truly progressive institution.

For our students, we go beyond textbooks to create an environment that fosters intellectual curiosity, creativity, emotional resilience, and social responsibility. We embrace innovative pedagogies, integrate technology meaningfully, and provide platforms where students can think critically, collaborate effectively, and express themselves confidently.

At GDS-HALOL, growth is not a destination but an ongoing journey, one that is driven by commitment, innovation, and a deep sense of purpose.

KIRAN MEWADA
MANAGING DIRECTOR



GLOBALITES



सरस्वति नमस्तुभ्यं वरदे कामरूपिणि ।
विद्यारम्भं करिष्यामि सिद्धिर्भवतु मे सदा ॥



STRONGER
TOGETHER

FOOD FOR SOUL

#MORNINGASSEMBLIES



Page 2



Page 2







41

TRA 400



41

TRA 400



41

TRA 400



41

TRA 400

WORLD
ART DAY





41

TRA 400



41

TRA 400



41

TRA 400



41

TRA 400



International

DANCE

Day





EARTH DAY

The celebration of World Earth Day at GDS-HALOL was a beautiful reminder of our shared responsibility towards the planet. The entire school community, students, teachers, and staff, came together with enthusiasm and purpose to mark this meaningful occasion.

The highlight of the day was the inauguration of our very own Kitchen Garden, a step towards sustainability and environmental awareness. The garden was thoughtfully developed with the planting of a variety of vegetables, aromatic herbs, and fruit-bearing trees. From fresh greens to medicinal plants, every sapling symbolized hope for a greener tomorrow and a commitment to mindful living.

Students actively participated in the planting process, getting their hands in the soil and hearts connected to nature. It was not just an activity, but a learning experience, understanding the importance of self-sustenance, biodiversity, and eco-friendly practices.







HAPPY
HEARTH
DAY



SAVE
the
PLANET





CARNIVAL



**TALENT HITS A TARGET NO ONE ELSE CAN HIT;
GENIUS HITS A TARGET NO ONE ELSE CAN SEE'**

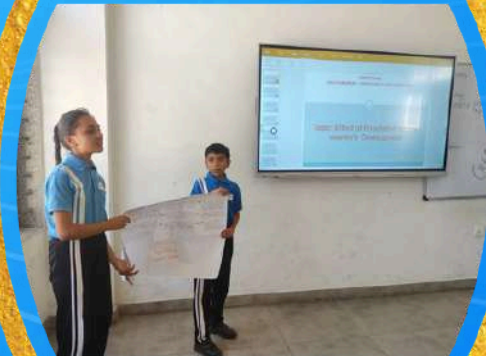
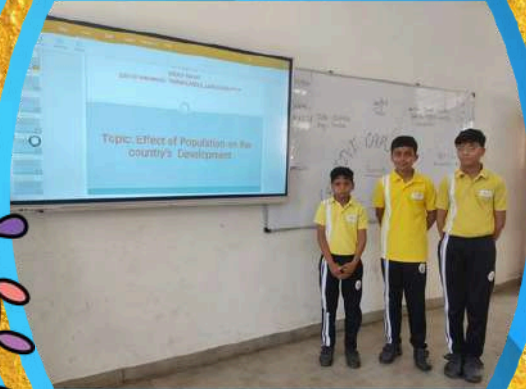
The campus of GDS-HALOL came alive with enthusiasm and creativity as it organised a vibrant Creative Carnival. The event featured a wide array of activities and competitions, each reflecting the rich, multi-disciplinary talents of the students in various areas like painting, listening, quiz, case study and debate.

From artistic expressions to innovative presentations, every corner resonated with energy and imagination.

Behind this remarkable showcase stood the dedicated teachers, the true torchbearers, who mentored, motivated, and guided the students at every step, ensuring their ideas transformed into inspiring performances.











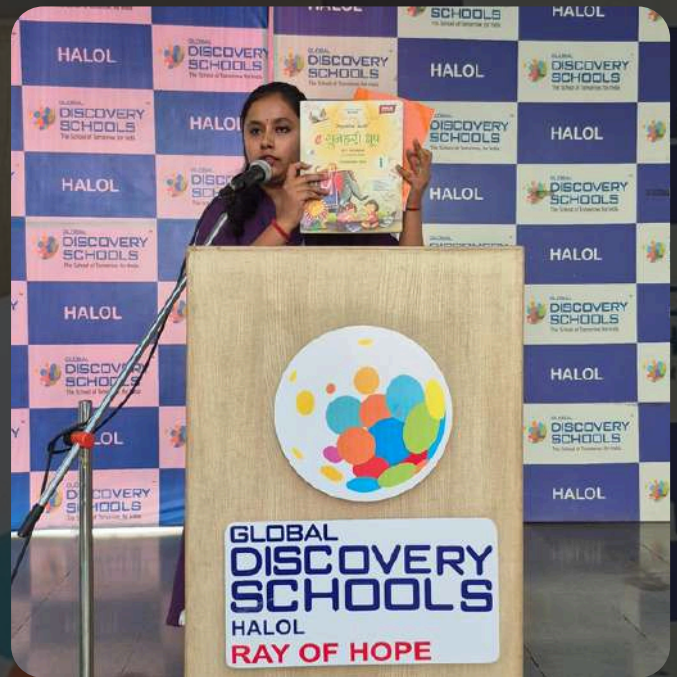




**FUN
FUN
FUN**

FIRST GRADE ORIENTATION





RAY OF HOPE

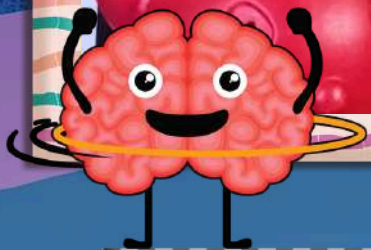


Kindergarten



RE-OPENING DAY





COLOURS AHA! DAY





Happy Earth day



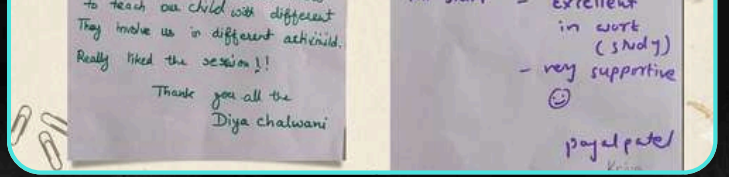
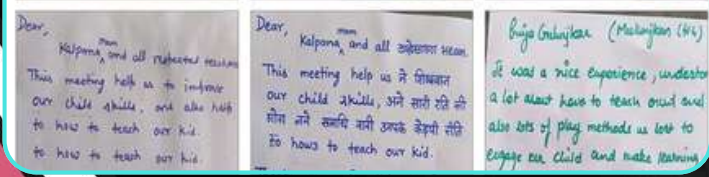
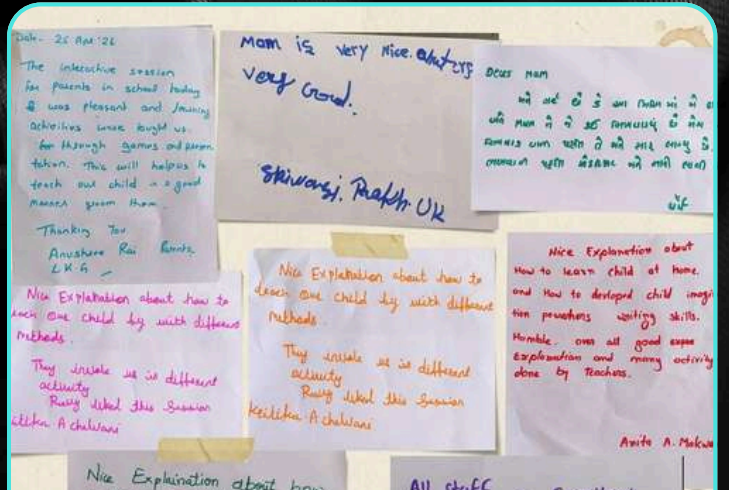
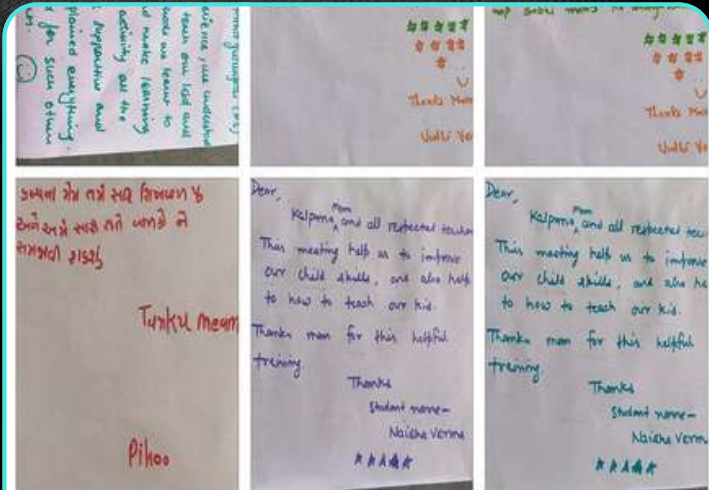


SAVE THE PLANET

PARENT TRAINING SESSION









DANCE







Let's Party



UPCOMING EVENTS

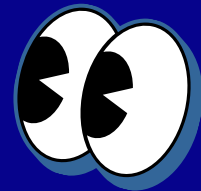


What!





Thank
you!



GLOBAL
DISCOVERY
SCHOOL
HALOL
RAY OF HOPE