

ST. THOMAS SCHOOL, SAHIBABAD
WORKSHEET CYCLE TEST – IV (2025 – 2026)

EVS
CLASS – I

TIME ALLOWED: 1 HOUR

MARKS OBTAINED: _____

NAME: _____ SECTION: _____ ROLL NO.: _____ DATE: _____ MM: 25

1. Tick (✓) the correct option:

- (i) Big plants are called _____. 1
(A) shrubs [] (B) trees [] (C) climbers [] (D) creepers []
- (ii) _____ is a wild animal. 1
(A) Dog [] (B) Sheep [] (C) Cow [] (D) Lion []
- (iii) We get honey from _____. 1
(A) hen [] (B) cat [] (C) goat [] (D) honeybee []
- (iv) We use _____ to cover long distance on land. 1
(A) bicycle [] (B) rickshaw [] (C) train [] (D) bullock cart []

2. Fill in the blanks using the words given in the box:

habitat	boat	rockets	rubber
---------	------	---------	--------

- (a) A _____ sails on rivers and lakes. 1
- (b) _____ is used to make tyres and tubes. 1
- (c) The place where an animal lives is called _____. 1
- (d) _____ are used to travel to the space. 1

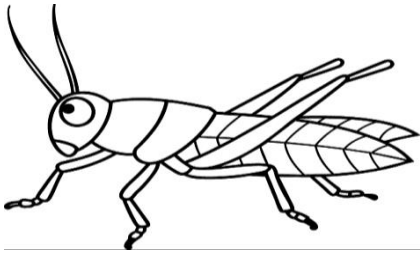
3. Rearrange the jumbled letters to write the correct word:

- (a) werflo - _____ 1
- (b) crreepes - _____ 1
- (c) tanhpele - _____ 1
- (d) ratroct - _____ 1

4. Identify the following pictures:

3

(a)



(b)



(c)



5. Write (T) for True and (F) for False:

(a) We get eggs from hen and duck.

1

(b) Vehicles that fly in air are called land transport.

1

6. Define the following:

(a) Domestic animals - _____

2

(b) Herbs - _____

2

7. Answer the following questions:

(a) What are the means of land transport?

1

Ans

(b) Why do creepers grow along the ground?

1

Ans

(c) Write two examples of shrubs.

1

Ans

(d) Name two fibres that we get from animals.

1

Ans
